

The British Army on the Western Front:

The difficult road to Victory, 1914-18

8.00pm 18th July Liston Hall Marlow

£5.00 inc refreshments

Tickets - www.marlowww1.org.uk/tickets

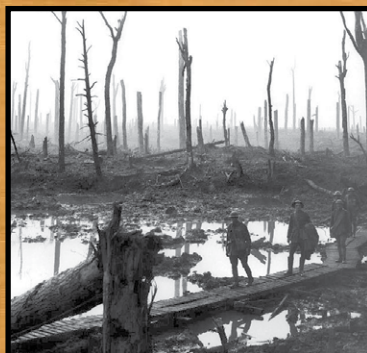
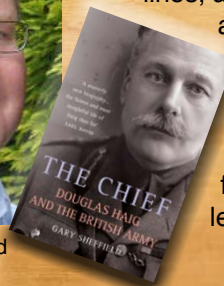
Or purchase from Marlow Tourist Office

By Garry Sheffield, TV & radio broadcaster, academic and acclaimed author of "The Chief: Douglas Haig and the British Army"

In this lecture, which is the first of our series of events covering the next four years, Professor Garry Sheffield from Wolverhampton University examines the British army on the Western Front in the First World War. He looks at the reasons why it was so difficult to break through the trench lines, and the bloody learning process that army underwent. He attacks the idea that the army was composed of 'lions led by donkeys', and shows how, by the Hundred Days length battles of 1918, had emerged as a formidable fighting force that took the lead in defeating the German army.



Professor Garry Sheffield



Local displays on Marlow's WW1 involvement will be on display in Marlow Museum <http://marlowmuseum.wordpress.com/>

Web: www.marlowww1.org.uk

Tickets: www.marlowww1.org.uk/tickets

email tickets@marlowww1.org.uk

 Marlow